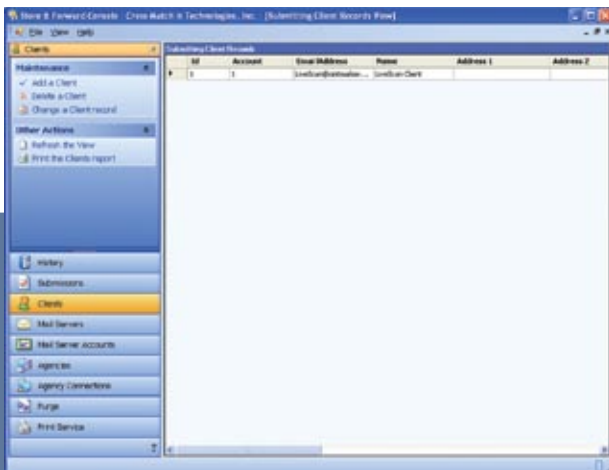


PRODUCTS

Store and Forward Solution

Central Repository for Electronic Fingerprint Transmission (EFT) Records



The Cross Match® Store and Forward Solution was designed for organizations processing applicant and/or criminal fingerprint submissions from multiple livescan systems. As a central repository for Electronic Fingerprint Transmission (EFT) records, the solution is optimized for large-scale livescan system installations. The solution centralizes the EFT records from distributed livescan systems for transmission to a receiving agency, such as the Federal Bureau of Investigation's (FBI) Integrated Automated Fingerprint Identification System (IAFIS).

Specifically designed to collect, bundle and forward biometric data, the solution enables SSL and/or S/MIME encrypted messaging from livescan systems to the Store and Forward Solution. Additionally, the solution allows users to print fingerprint cards, which conform to receiving agency standards, and create customized transaction reports. Further customization is possible including imports, exports and incorporating customer-specific process flow requirements.

A scalable system, the Store and Forward Solution easily integrates into most IT infrastructures — making it an ideal solution for your organization.

Store and Forward Solution

Benefits

- Automatic polling EFT records to process and queue them for forwarding to a receiving agency (RA)
- Processes biometric data: receive, forward, view biographical data, and print
- Transactional and user-defined biographical data stored in high-end database
- Supports multiple submission protocols as required by receiving agency
- Highly scaleable and flexible
- Graphic interface with user management tools
- Small server footprint allows for greater capacity

System Requirements

- Microsoft Windows Server 2003 SP1 or higher
- Microsoft .NET 1.1 or higher
- Microsoft SQL Server 2005

System Capabilities

- File receiving from multiple sources
- Response handling
- File forwarding to multiple targets and response handling
- File storage
- Viewing of information contained in EFT record
- Printing of ten-print cards as required by receiving agency
- Capable of holding and manually forwarding records received from livescan systems

- Purging of EFT records and/or demographic information on a timed basis
- Logging functions
- Generic reports provided; user can also create custom reports
- Built-in SMTP and POP3 server

Administration

- User management via graphical user interface (GUI)
- Rights management via GUI
- Graphical configuration tool
- InstallShield-based setup

Submission protocols

- From livescan system installations to Store and Forward Solution: SMTP/SMTSP/POP3/POP3S

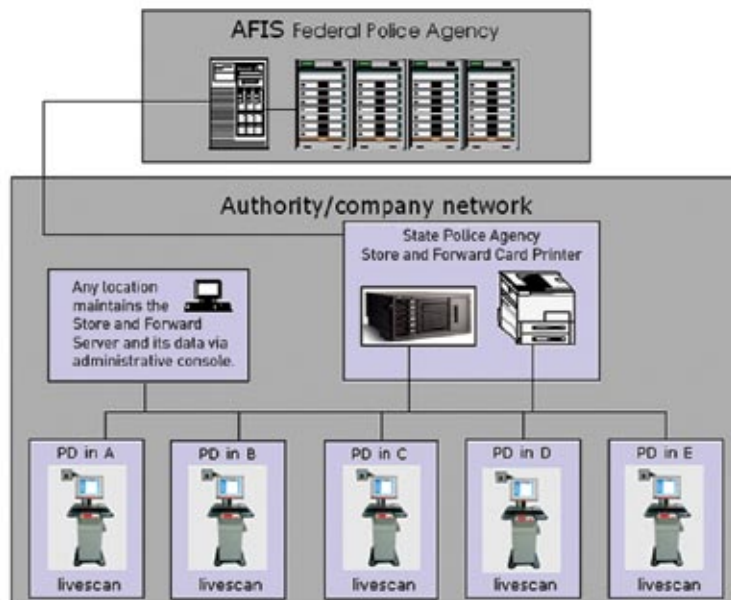
- From Store and Forward Solution to receiving agency: SMTP/POP3/FTP as required by receiving agency

Transaction Storage

- Microsoft SQL Server 2005

Optional Customization

- Import interface
- Export interface
- Custom response processing, data flow and handling
- Custom print cards/forms
- Custom reports provided during installation and setup



Corporate Headquarters:

Cross Match Technologies, Inc.
3950 RCA Boulevard, Suite 5001
Palm Beach Gardens, FL 33410, USA
sales@crossmatch.com
customer@crossmatch.com
www.crossmatch.com

Protecting People, Property and Privacy